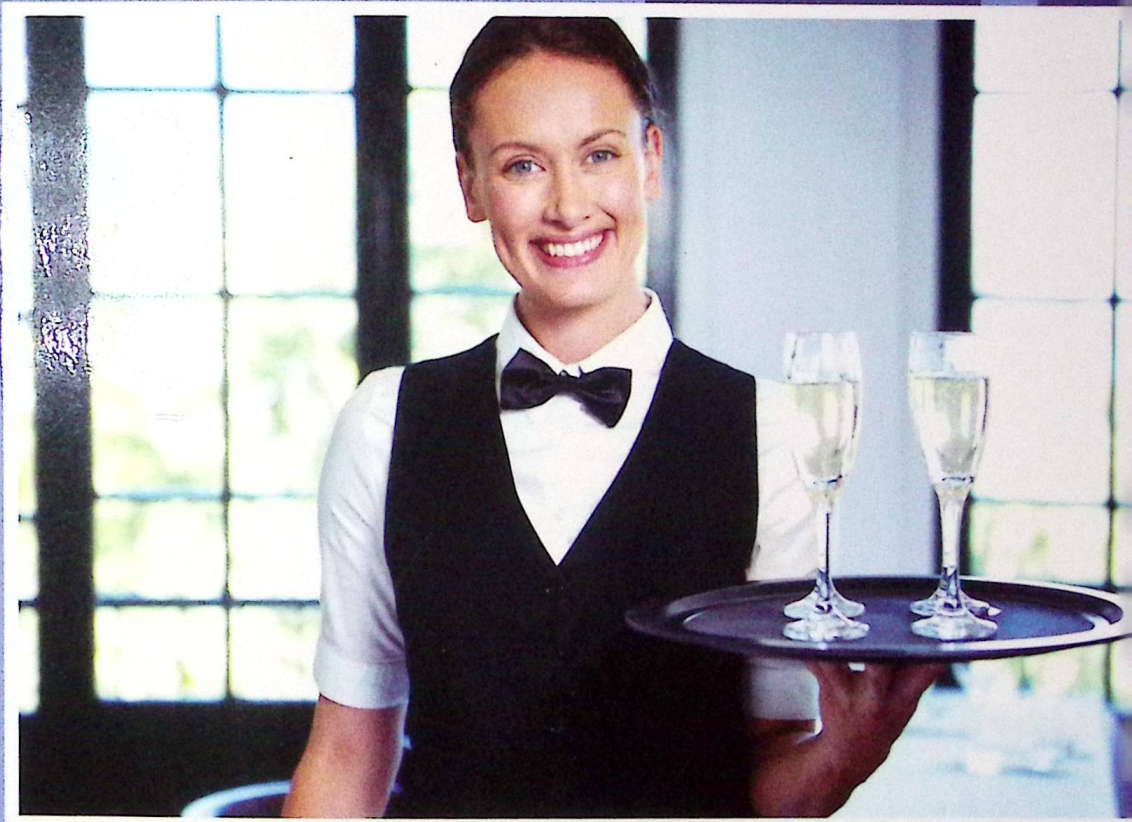


Knowledge
Series

Hospitality and Tourism Management



 WILLFORD PRESS

Gunther Faulkner

Hospitality and Tourism Management

Gunther Faulkner


 WILLFORD PRESS
www.willfordpress.com

TABLE OF CONTENTS

Preface	VII
Chapter 1 Tourism and Tourism Management	1
▪ Tourism	1
▪ Travel and Sustainability	10
▪ Tourism Management	18
▪ Impact of Tourism	24
▪ Plog's Model of Tourists Behavior	46
▪ Motivation Factors of the Tourists	48
Chapter 2 Types of Tourism	50
▪ Tourism and Religion	50
▪ Medical Tourism	53
▪ Food Tourism	59
▪ Cultural Tourism	63
▪ Accessible Tourism	76
▪ Niche Tourism	80
▪ Adventure Tourism	82
▪ Dark Tourism	88
▪ Jungle Tourism	90
▪ Ecotourism	92
▪ Creative Tourism	104
▪ Heritage Tourism	107
▪ City Tourism	110
▪ Business Tourism	118
▪ Sports Tourism	119
▪ Sustainable Tourism	121
▪ Social Tourism	132
▪ Educational Tourism	134

Chapter 3	Hotel and its Types.....	137
▪	Hotel Industry	137
▪	Apartment Hotel	150
▪	Hotel Barge	152
▪	Capsule Hotels	156
▪	Bed and Breakfast	158
▪	Motel	159
▪	Resort Hotel	178
▪	Boutique Hotel	180
▪	Condo Hotel	181
▪	Flop House	184
▪	Eco Hotels	186
Chapter 4	Hospitality Management.....	198
▪	Consumer Behavior in Hospitality Industry	200
▪	Hotel Energy Management	209
▪	Hospitality Law	210
▪	Consumer Relationship Management in Hospitality Sector	211
Chapter 5	Services in Hospitality Industry	217
▪	Hospitality Industry	217
▪	Hospitality Services	220
▪	The Importance of Customer Service in the Hospitality Industry	221
▪	Food Service	222
▪	Types of Food and Beverage Services in Hotels	224
▪	Hotel Organization	236
▪	Service Quality and Customer Satisfaction	237
▪	Room Service	240

Permissions

Index

INDEX

A

Accessible Tourism, 76, 78
Adventure Tourism, 80, 82-88
Agritourism, 60
Allocentric, 46
Architectural Park, 71
Arts Tourism, 66, 68, 71-72, 74

B

Bird Watching, 84
Boutique Hotels, 137, 170, 173, 180-181
Budget Travelers, 21
Business Tourism, 50, 118-119

C

Camp Sites, 23, 162
Capsule Hotels, 137, 156-158
Casual Cultural Tourist, 73
Caving, 83-84
City Tourism, 110-112, 114-116
City Trip, 71, 112
Coastal Tourism, 125-126
Creative Tourism, 74, 104-107
Culinary Tourism, 59-61
Cultural Tourism, 50, 60, 63-74, 107

D

Dark Tourism, 88-90
Dental Tourism, 53
Domestic Tourist, 58

E

Eco Tourism, 11, 127
Ecotourism, 82, 92-103, 127-128
Educational Tourism, 134-136
Ethnic Tourism, 66
Experiential Travel, 60, 113-114, 116
Extrinsic Tourists, 20

F

Fertility Tourism, 53

Festival Tourism, 74

Food Tourism, 50, 59-60

Foreign Exchange, 1, 32, 34-35, 37, 87, 127, 145

Foreign Markets, 5

G

Global Tourism, 33, 37-38, 63, 69, 121
Green Travel, 11
Green Washing, 14-15, 98
Grief Tourism, 88
Guided Tours, 24, 89

H

Henley Centre Model, 47
Heritage Tourism, 66, 68, 80, 88-89, 107-110
Hill Climbing, 82
Hotel Barges, 137, 153-156
Humane Tourism, 130-131

I

International Tourism, 6, 34, 58, 91, 118, 121, 124, 127
Intrinsic Tourists, 20

J

Jewish Travelers, 50
Jungle Tourism, 50, 90, 92

L

Locally-owned Accommodation, 13
Long-haul Travel, 6

M

Mass Tourist, 63
Medical Tourism, 50, 53-58
Motels, 137, 142, 159-165, 167-177, 241
Mountain Tourism, 126

N

Natural Resource Management, 97
Nature Tourism, 80, 98
Niche Tourism, 50, 80-81

O

Opera Tourism, 74

P

Pro Poor Tourism, 39-40, 46

R

Religious Tourism, 50-51, 219

S

Scuba Dive, 16

Sightseeing Cultural Tourist, 73

Snorkel, 16

Social Tourism, 50, 132-133

Soft Adventure, 83-84

Sports Tourism, 50, 119-121

Sustainable Travel, 10-13, 15, 122

T

Theme Parks, 22, 70-71, 74, 178

Tour Package, 24, 46

Tourism Activity, 9, 15, 67, 88

Tourism Business, 15, 19-20, 37, 118, 153

Tourism Consumers, 120

Tourism Demand, 20, 103

Tourism Industry, 1-2, 5, 8, 10, 18, 22, 25, 31-32, 35, 37-38, 44, 58, 67, 78, 82, 86-87, 95, 98-99, 108, 121-122, 124, 128, 131, 135, 187, 198, 217-218

Tourism Irritation, 7

Tourism Management, 1, 18, 20, 103

Tourist Behavior, 7

Tourist Destinations, 10, 23, 76, 82, 112, 124, 126

Travel Cycle, 112-113

Tropical Destinations, 91

W

Wellness Tourism, 53, 58-59

Wildlife Tourism, 11, 15

